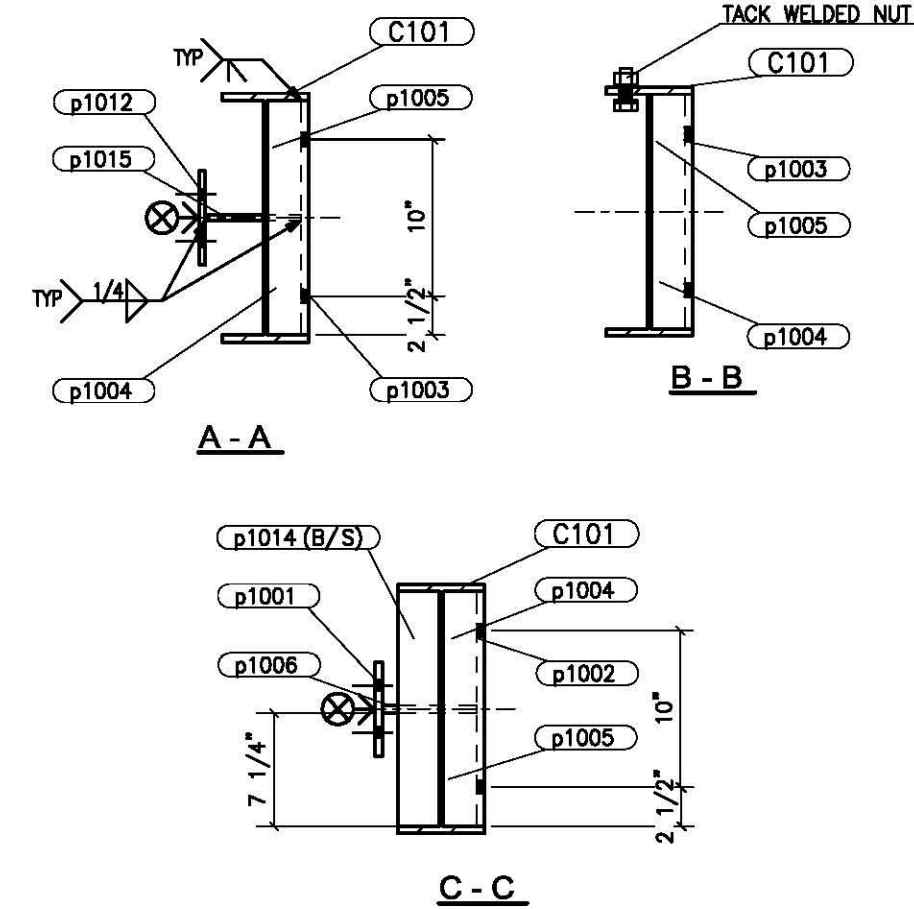
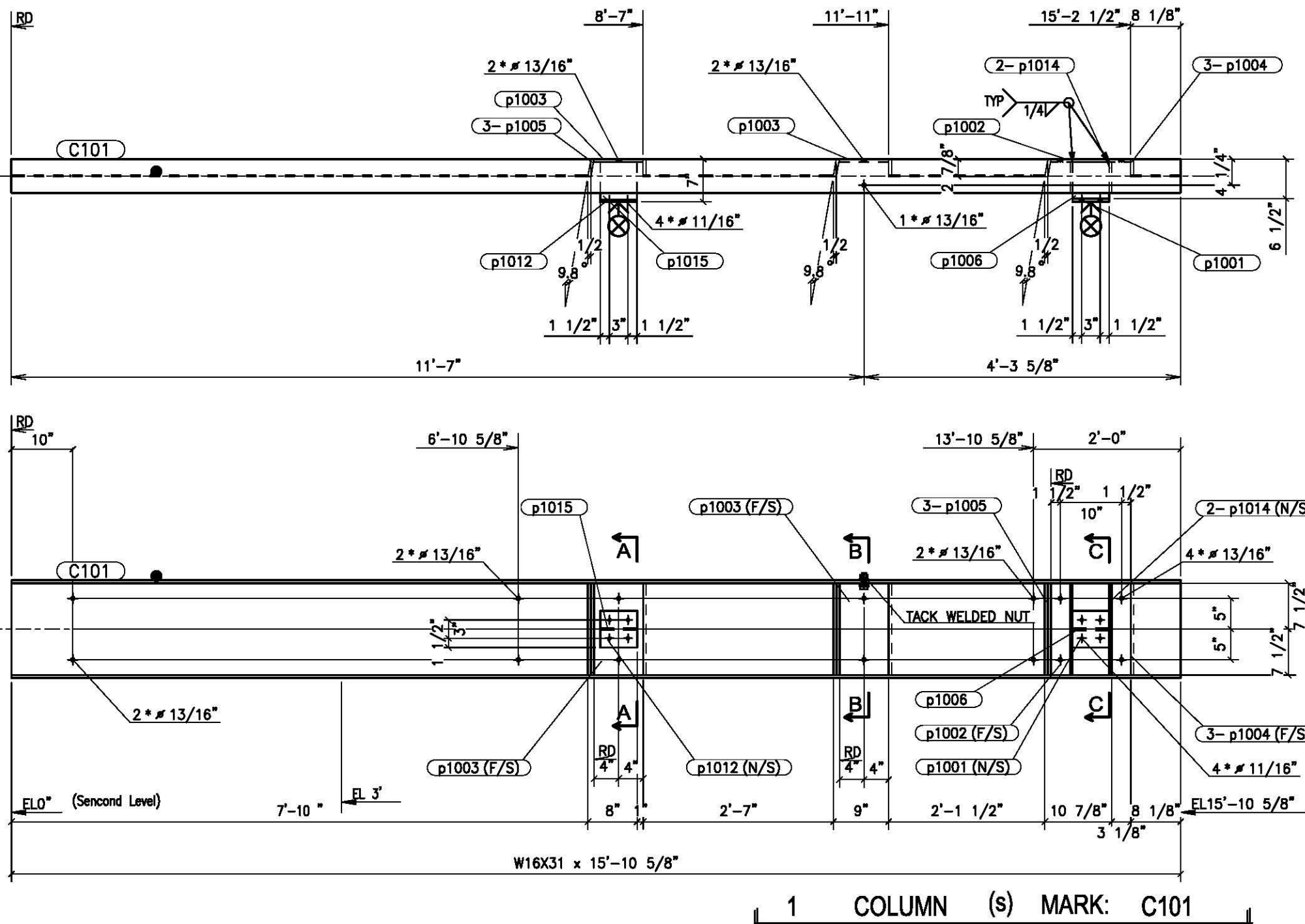


LOCATION				
Mark	Quant.	T.O.S.	Grid ref.	Area
C101	1	15'-10 5/8"	Y/1	11482.3

BILL OF MATERIAL								
ASSEMBLY MARK	SHOPPING MARK	ASSY MARK	No. REQD	DESCRIPTION	LENGTH	GRADE	WEIGHT	REMARKS
C101			1	W16X31	15'-10 5/8"	350W	483	
		C101	1	FL1/2X6	0'-6"	300W	5.1	
		p1001	1	FL1/2X13	1'-3"	300W	27.7	
		p1002	1	FL1/2X8	1'-3"	300W	17	
		p1003	2	FL1/2X2 5/8	1'-3"	300W	5.6	
		p1004	3	FL1/2X3	1'-3"	300W	6.2	
		p1005	1	FL1/2X6	0'-6"	300W	5.1	
		p1006	1	FL3/8X6	0'-6"	300W	3.8	
		p1012	2	PL3/8X5	1'-3"	300W	8	
		p1014	2	FL3/8X6	0'-6 1/8"	300W	3.9	
		p1015	1	FL3/8X6	0'-6 1/8"	300W	3.9	
				TOTAL=			624.2	

BOLT SUMMARY - QTY'S ARE FOR ONE ASSEMBLY ONLY						
Assembly	No	Diam	Length	Workshop/Site	Grade	Remarks
C101	4	5/8"	2 1/2"	Site	A325	
C101	1	3/4"	2 1/4"	Site	A325	



D | 15 7/8" x 1/4"
W | 7" x 7/16"

BELAIR FABRICATION LTD.
1667 COLUMBIA STREET
NORTH VANCOUVER, B.C. V7J 1A5
TEL: (604) 924-0845
FAX: (604) 924-0846

PACIFIC
Detailing Inc.
TEL: (604) 924-0049 FAX: (604) 924-0846

PLEASE VERIFY ALL CLOUDED AREAS AND BOXED DIMENSIONS

CLOUDED AREAS NOT ANSWERED SHALL BE CONSIDERED CORRECT AS WRITTEN OR SHOWN

JUL/11/2007	ISSUED FOR APPROVAL
SHOP PAINT:	
C101	
NO BACK CHARGES WILL BE ACCEPTED WITHOUT PRIOR AUTHORIZATION IN WRITING	
NOTE:	

JOB NAME & LOCATION:		ARCH: OMICRON ARCHITECTURE ENGINEERING CONSTRUCTION LTD.	
BUSINESS OBJECTS		ENGR:	
910 MAINLAND STREET, VANCOUVER, B.C.		CONTR: HALSE MARTIN CONSTRUCTION	
REF:	DRAWN BY: WX JULY10/2007	CHECKED BY: FX JULY12/2007	JOB NO. 1006261
SHEET TITLE: COLUMN			DWG. NO. C101

MATERIAL: 300W U.N.O.	SURF. PREP:
BOLT: A325 U.N.O.	WELD: LEG SIZE
HOLE SIZE: 13/16" Ø U.N.O.	ELECTRODE: