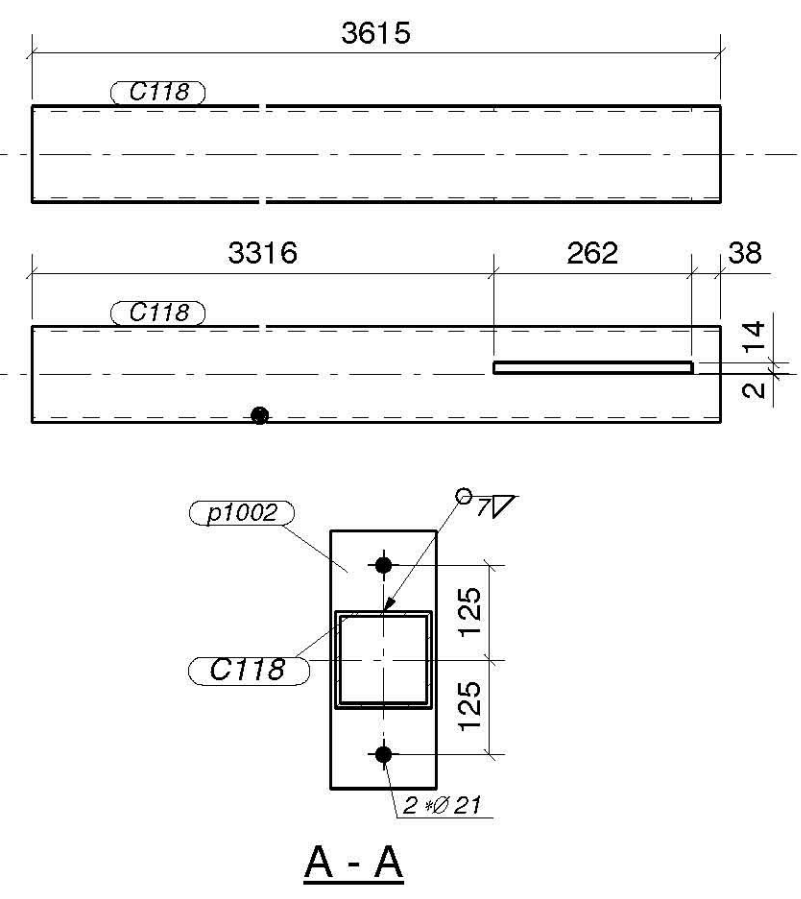
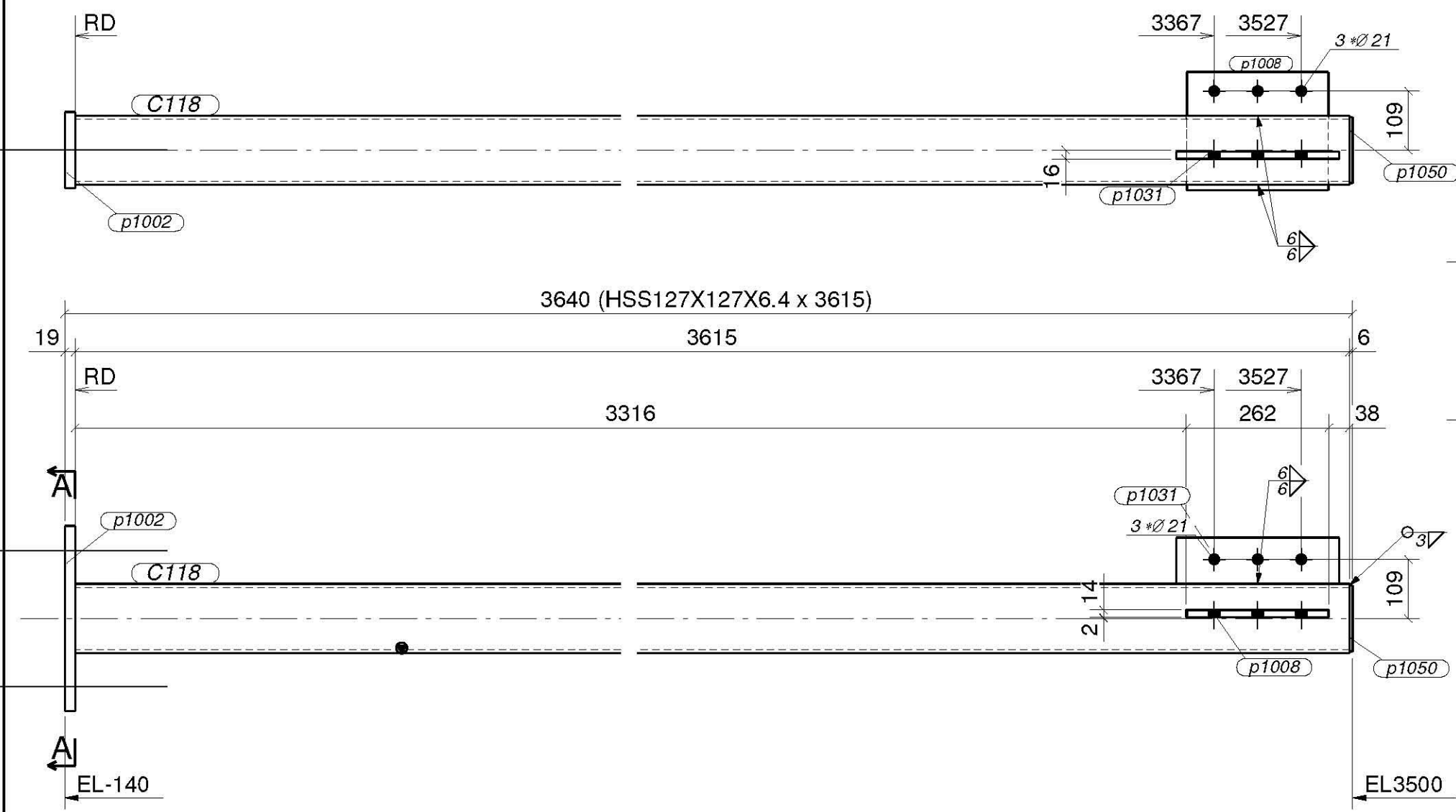


LOCATION				
Mark	Quant.	T.O.S.	Grid ref.	Area
C118	1	+3.494	EX10/BA-EX	

BILL OF MATERIAL										
ASM MARK	SHIPPING MARK	ASSY MARK	No RECD	DESCRIPTION	LENGHT	GRADE	WEIGHT	REMARKS		
	C118		1							
		C118	1	HSS127X127X6	43615	350W	83.9	CLASS C		
		p1002	1	PL19X140	340	300W	7.1			
		p1008	1	PL13X217	260	300W	5.8			
		p1031	1	PL13X85	300	300W	2.6			
		p1050	1	PL6X121	121	300W	0.7			
TOTAL=							100.0			

BOLT SUMMARY - QTY'S ARE FOR ONE ASSEMBLY ONLY						
Assembly	No	Diam	Length	Workshop/Site	Grade	Remarks
C118	2	19	356	Site	CLASS 5.8	



1 COLUMN (s) MARK: C118

D	127.00	x
W	127.00	x

PLEASE VERIFY ALL CLOUDED AREAS AND BOXED DIMENSIONS

CLOUDED AREAS NOT ANSWER SHALL BE CONSIDERED CORRECT AS WRITTEN OR SHOWN

MAR 28 2006	ISSUED FOR CONSTRUCTION
SHOP PAINT:	
[C.118]	ONE COAT OF ZINC OXIDE IN ACCORDANCE WITH THE MANUFACTURERS INSTRUCTIONS
NO BACK CHARGES WILL BE ACCEPTED WITHOUT PRIOR AUTHORIZATION IN WRITING	
NOTE:	

BELAIR FABRICATION LTD.
 1667 COLUMBIA STREET
 NORTH VANCOUVER, B.C. V7J 1A5
 TEL: (604) 924-0845
 FAX: (604) 924-0846

PACIFIC
 Detailing Inc.
 TEL: (604) 924-0049 FAX: (604) 924-0846

JOB NAME & LOCATION:		JOB NO. KW-0008	
LANGLEY FUNDAMENTAL SCHOOL		ENGR. POMEROY ENGINEERING LTD.	
21250 42ND AVENUE, LANGLEY, B. C.		CONTR. TPC 2000 VANTURES INC.	
REF: S-1 w/ S-5 & A1 w/ A6	DRAWN BY: LJK 02/13/2006	CHECKED BY: MWK 03/28/2006	DWG. NO. C118
SHEET TITLE		CAD FILENAME: KW-0008	
COLUMN - MEZZANINE FLOOR		MODIFIED DATE: 03/28/2006	
		LAST PLOT DATE: 03/28/2006	

MATERIAL: 300W U.N.O.	SURF. PREP:
BOLT: A325 U.N.O.	WELD: min. 5 FILET
HOLE SIZE: 21 Ø U.N.O.	ELECTRODE: E48XX